



# ONLINE CABINETRY DESIGN EXPERTS

We bring your dream project to life  
from the comfort of your own home.



2,000+ Verified Consumer Reviews

# ALLISON SMITH

Diamond Kitchen Design  
5/4/22

Phone: 123-456-7890

Email: [customeremail@gmail.com](mailto:customeremail@gmail.com)

Address: 100 ABC Street, Chicago, IL

# INDEX: YOUR DESIGN PACKAGE AT A GLANCE

2

<a href="#"><u>3</u></a>	Why Diamond	<a href="#"><u>11</u></a>	Rendering: Island
<a href="#"><u>4</u></a>	Project Inspiration	<a href="#"><u>12</u></a>	Rendering: Top View
<a href="#"><u>5</u></a>	Project Summary	<a href="#"><u>13</u></a>	Organization Recommendations
<a href="#"><u>6</u></a>	Rendering: Perspective	<a href="#"><u>15</u></a>	Design Recommendations
<a href="#"><u>8</u></a>	Rendering: Range Wall	<a href="#"><u>16</u></a>	Pricing
<a href="#"><u>9</u></a>	Rendering: Refrigerator Wall	<a href="#"><u>17</u></a>	Appendix (Dimensions)
<a href="#"><u>10</u></a>	Rendering: Sink Wall		

## Why Diamond?

View our video to discover the unique advantages of Diamond:



### COLOR

- ✓ Widest, most on-trend palette in the showroom
- ✓ HGTV HOME™ by Sherwin-Williams paints



### QUALITY

- ✓ Highest quality cabinet at every price point
- ✓ Strongest cabinet in the showroom



### SERVICE

- ✓ Industry's best Sales & Customer Service teams
- ✓ Backed by #1 cabinet manufacturer in the USA, with a limited lifetime warranty



### REVIEWS

- ✓ Rated 4.2/5 with 2,000+ reviews from verified consumers
- ✓ All reviews posted, regardless of rating, by neutral 3<sup>rd</sup> party company

•

[BACK TO INDEX](#)

# LOWE'S

## Smith Kitchen

### CABINETS

**Prelude®**  
Macaulay Maritime

**Diamond**®  
my kind of  
*cabinetry*

### FLOORING

Style Selections  
NATURAL ACACIA  
ITEM #579934

### WALL PAINT

SWAINSON  
SOFTWARE  
ITEM #HGSW1463

### COUNTERTOP

SILESTONE  
SILESTONE CALACATTA  
CLASSIC  
ITEM #1026518


### HARDWARE

Diamond  
7" CONTEMPORARY PULL -  
GOLD  
ITEM #PULL1907

### FAUCET


MOEN  
MOEN EDWYN MATE BLACK  
1 HANDLE  
ITEM #118697

Design level: STANDARD




# Smith Kitchen

CABINETRY



Macaulay Maritime




my kind of  
cabinetry

## Cabinet Budget Breakdown

### Your Selections

#### Shape



U-Shaped

L-Shaped

Single wall

#### Design Level

STANDARD KITCHEN FEATURES:

- Basic Crown Moulding / No Under Cabinet Moulding
- Cabinet Ends Finished w/ Veneer Skins for a Flush Appearance
- Minimal Decorative Features (Glass), Wall Cabinets 36"
- Moderate Finish and Customization Options

Basic \$	Standard \$\$	Intermediate \$\$\$	Advanced \$\$\$\$
-------------	------------------	------------------------	----------------------

### Cabinet Estimates

#### Average Kitchen Size

**\$8,900**

Starting price: 10' x 12' Includes 18 cabinets & trim

#### As Shown in Room Visualizer

**\$11,300**

Starting price: 17' x 10' Includes 17 cabinets & trim

Looking for a lower price? Check out Limited Design starting at \$4,800

\*Prices listed are based on the floorplan you submitted and should only be considered rough estimates as to give general project expectations. Based on general factors such as: actual measurements, molding choices, cabinet design, replacement S&P, modifications and style and finish color selections, final actual price will vary. Pricing shown is construction/finish. Values shown are estimated cabinet prices only. Use a kitchen designer for pricing details on other selections.

# PROJECT SUMMARY

[BACK TO INDEX](#)

Door Style:	Macaulay - Prelude
Door Material:	Painted
Door Finish:	Maritime
Room Shape:	Kitchen L-Shape
Design Level:	Standard
Ideal Design:	Organization features, In kitchen design seating
Current Dislikes:	Kitchen is generally just outdated. The room is closed off from the other rooms and does not have enough counter space or cabinet storage.
Cabinet Wish List:	Double Trash, Super Susan, Cutlery Insert



Appliance Details:	REFRIGERATOR Dimensions: 35 7/8"W 69 5/8"H Brand : GE Model #: CFCP1NIZSS	RANGE Dimensions: 30"W Brand : Model #:	SINK Dimensions: 30"W Brand: Model #:
	DISHWASHER Dimensions: 24"W Brand: GE Model #: CDW9380NSS	MICROWAVE Dimensions: 24"W Brand: Model #:	



# RENDERING: PERSPECTIVE

6

[BACK TO INDEX](#)



**Diamond**<sup>®</sup>  
my kind of  
*cabinetry*

# RENDERING: PERSPECTIVE

7

[BACK TO INDEX](#)



**Diamond**<sup>®</sup>  
my kind of  
*cabinetry*

# RENDERING: FRIDGE WALL

8

[BACK TO INDEX](#)



**Diamond**<sup>®</sup>  
my kind of  
*cabinetry*



# RENDERING: SINK WALL

9

[BACK TO INDEX](#)



**Diamond**<sup>®</sup>  
my kind of  
*cabinetry*

# RENDERING: PENINSULA

10

[BACK TO INDEX](#)



**Diamond**<sup>®</sup>  
my kind of  
*cabinetry*

# RENDERING: PENINSULA

11

[BACK TO INDEX](#)



**Diamond**<sup>®</sup>  
my kind of  
*cabinetry*

# RENDERING: ISLAND

12

[BACK TO INDEX](#)



**Diamond**<sup>®</sup>  
my kind of  
*cabinetry*



# RENDERING: TOP VIEW

[BACK TO INDEX](#)





# ORGANIZATION: RECOMMENDATIONS

14

[BACK TO INDEX](#)



[Dbl. Trash](#)



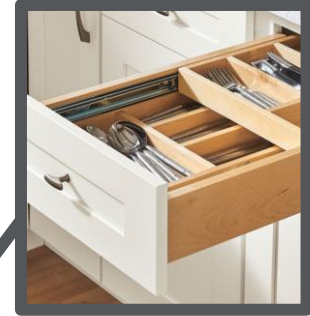
# ORGANIZATION: RECOMMENDATIONS

15

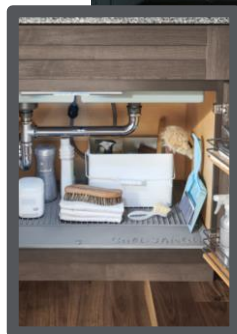
[BACK TO INDEX](#)



[Super Susan](#)



[Wood Tiered Cutlery Divider](#)

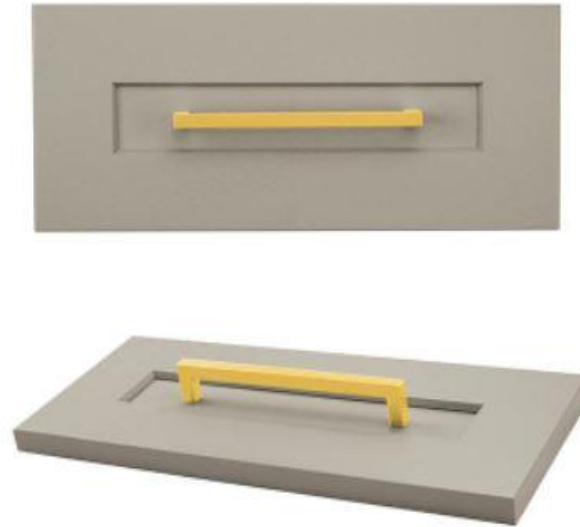


[Sink Base with CabMat™](#)

# DESIGN: RECOMMENDATIONS

16

[BACK TO INDEX](#)



*\*Included in pricing*

HARDWARE OPTION:  
[7" Contemporary Pull In Gold](#)

**MORE OPTIONS & STYLES AVAILABLE [HERE](#)**

# PRICING

[BACK TO INDEX](#)

BASE PRICE

\$15,761

— LOWE’S PROMOTIONS

☒ 30% OFF ☐ 20% OFF ☐ 10% OFF

— DESIGN PACKAGE CREDIT

\$199

== FINAL ESTIMATED PRICE

\$10,834

✓ Price estimate includes all Organization shown & Hardware Option 1.

✓ Price estimate does not include taxes or delivery charge.

\*Promos subject to change.



## TO CONTINUE YOUR REMODEL JOURNEY, SELECT ONE OF THE BELOW OPTIONS:

If you have any design changes, please complete the following form:

REQUEST  
DESIGN REVISION

To move forward with your dream project, please complete the following form:

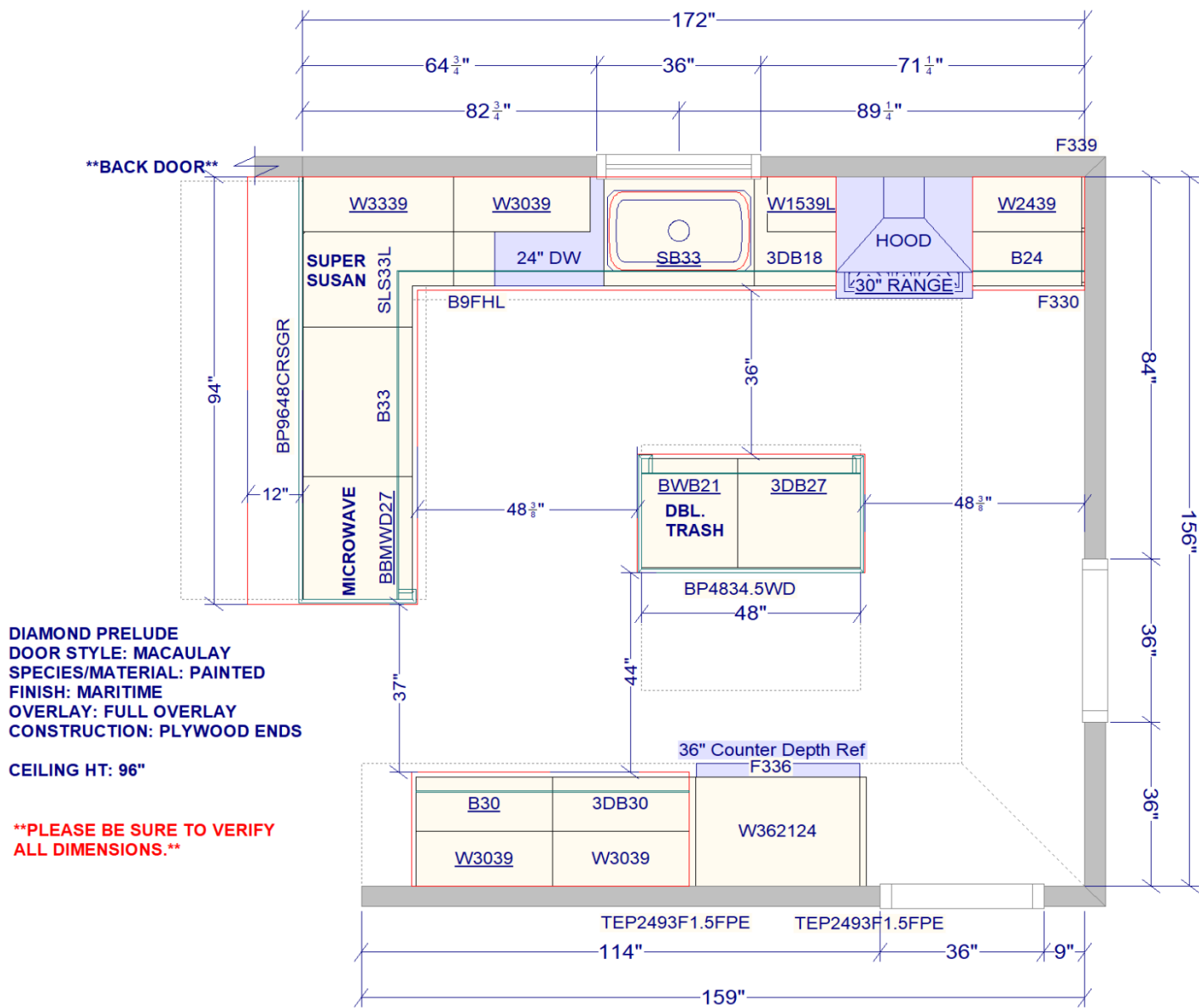
I'M READY TO  
PLACE MY ORDER

# APPENDIX



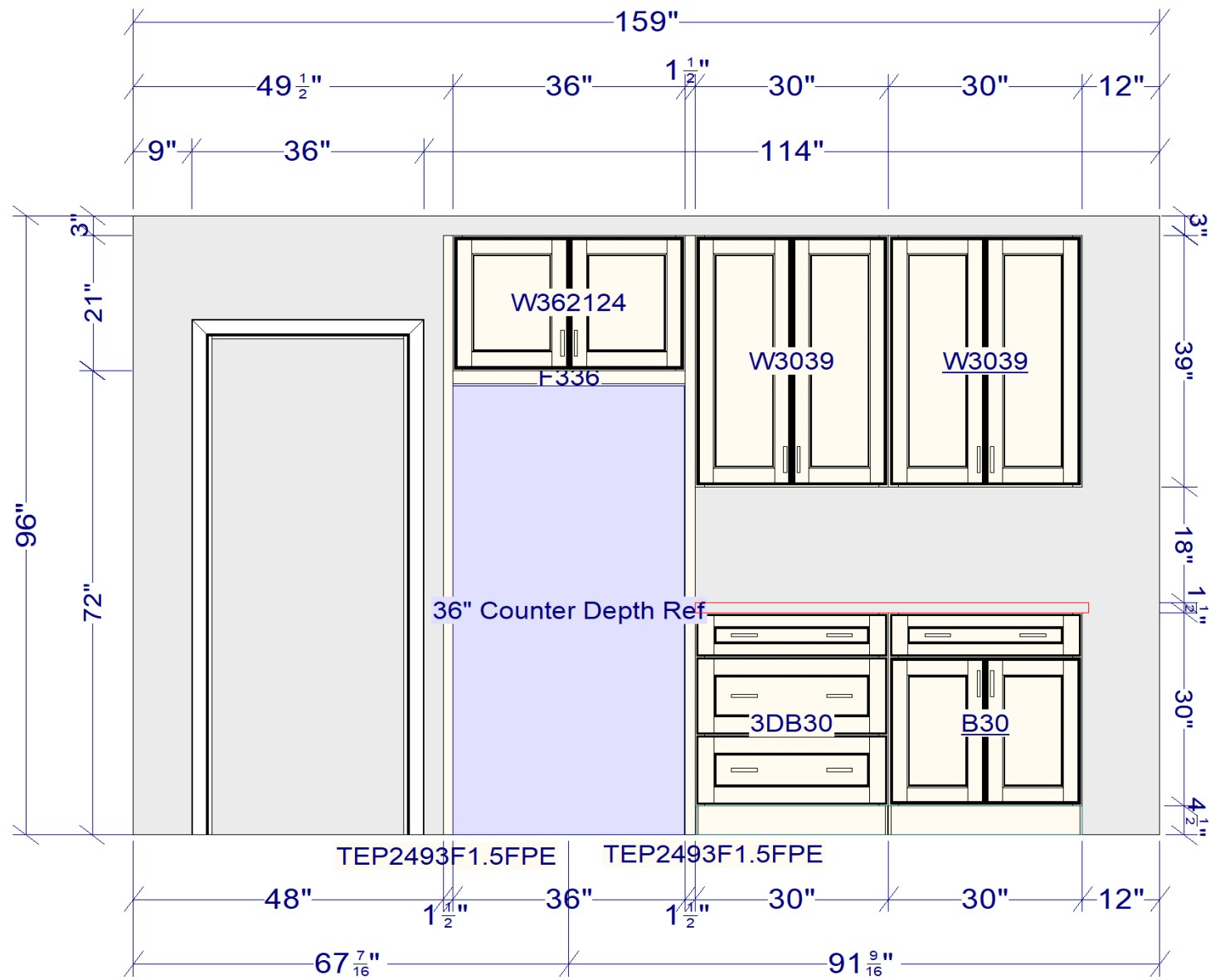
# DIMENSIONS: FLOOR PLAN

[BACK TO INDEX](#)



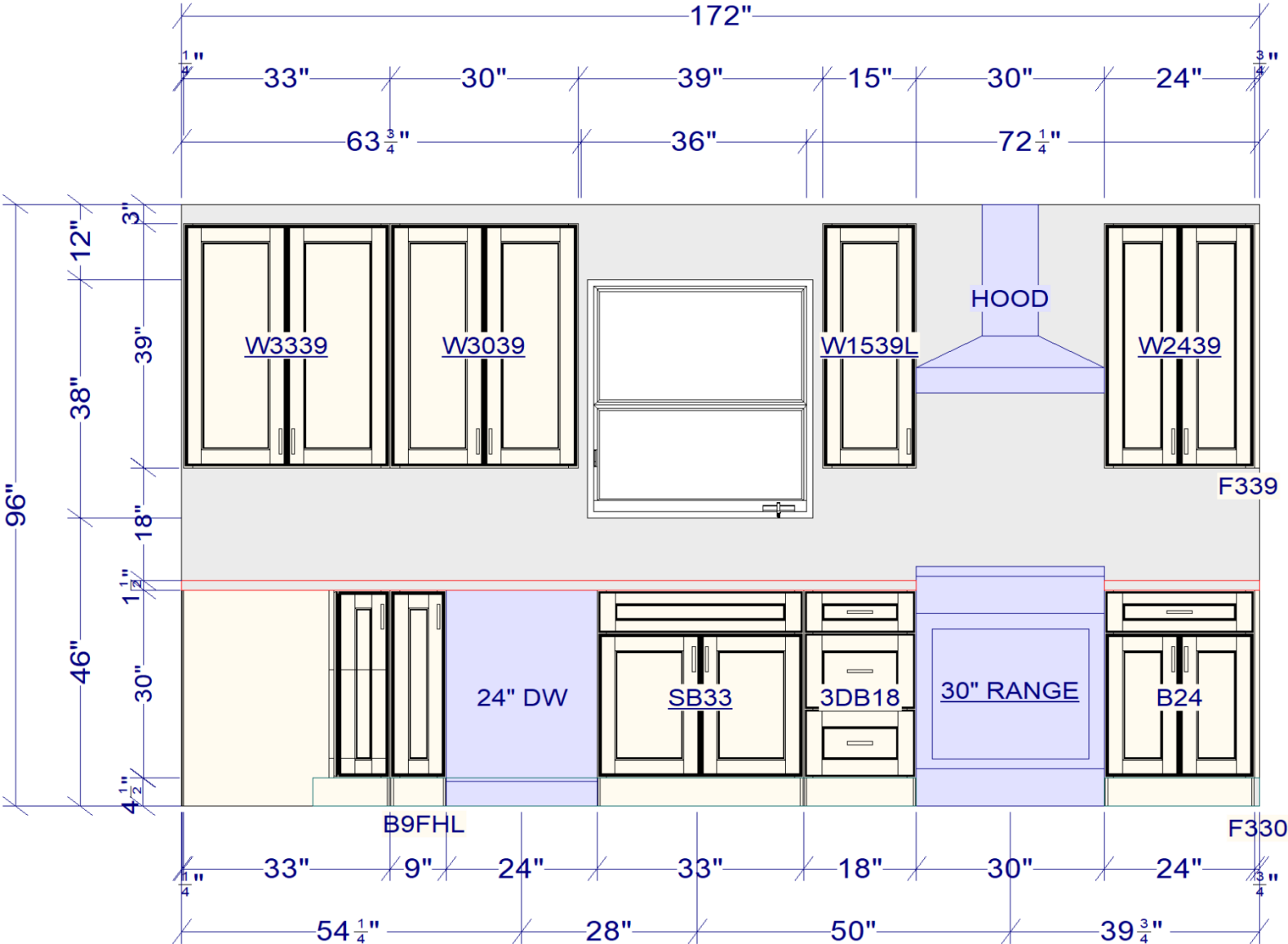
# DIMENSIONS: FRIDGE WALL

[BACK TO INDEX](#)



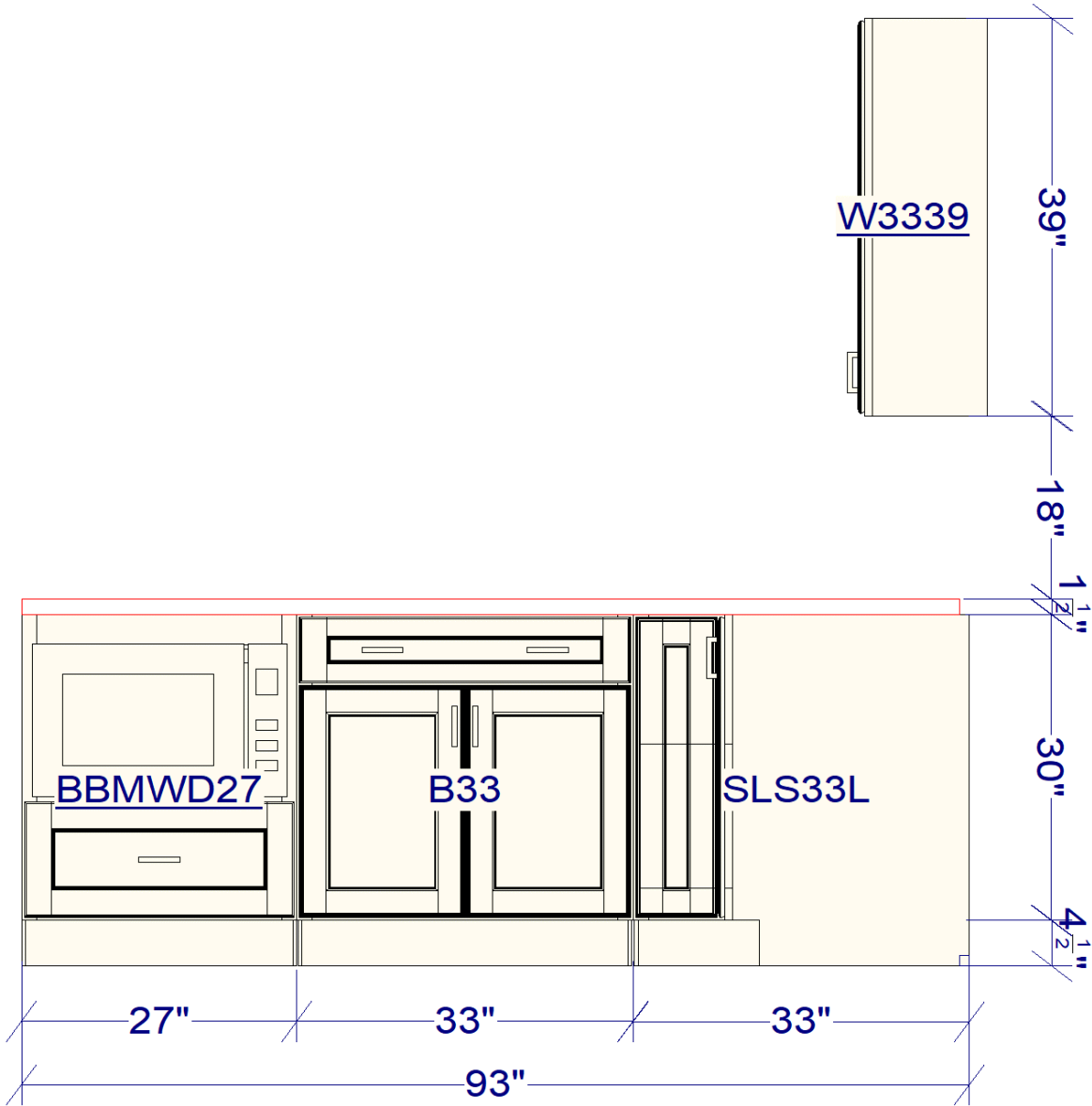
# DIMENSIONS: SINK WALL

[BACK TO INDEX](#)



# DIMENSIONS: PENINSULA

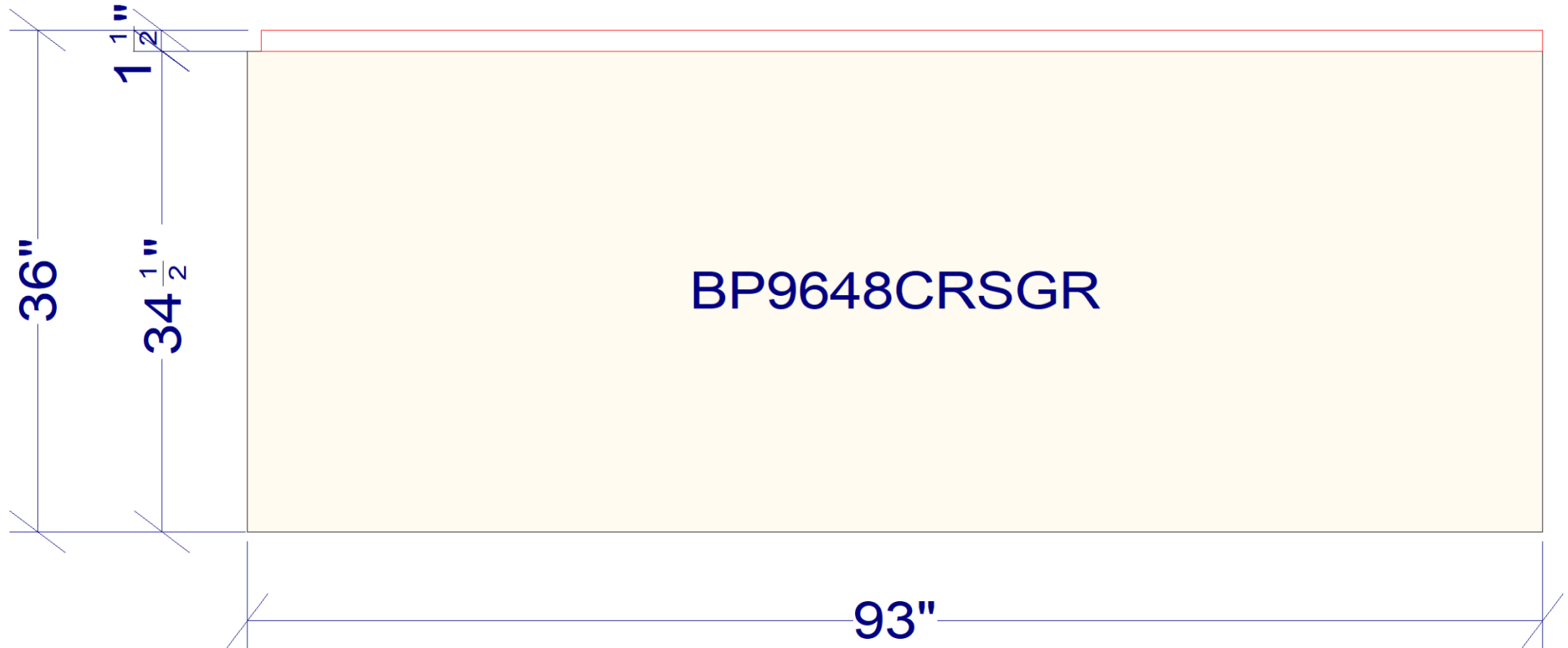
[BACK TO INDEX](#)



# DIMENSIONS: PENINSULA

23

[BACK TO INDEX](#)





# DIMENSIONS: ISLAND

[BACK TO INDEX](#)

